

The green meet

Sunday 5 May • 11.00 – 16.00





Fancy a treat?

Become a Friend of Fulham Palace and receive a hot drink & counter dessert in the drawing room café for just £5.75!

Angel's Kitchen

Vietnamese hot food and
Hong Kong desserts pastry

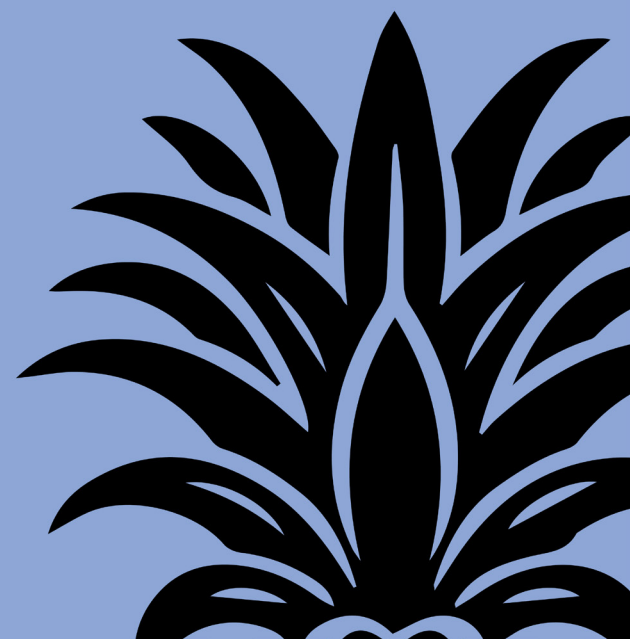


Records of happiness

Free exhibition 23 April – 9 June

ANANAS

Discover the latest art installation in
the Palace's historic walled garden.



Welcome!

Thank you for joining our annual green meet celebration.

There's plenty happening today, so be sure to explore the grounds and enjoy all the great food, stalls, talks, workshops and activities we have lined up.

For those looking to learn

Join Lara Torres for a photography and wildlife workshop and a bee walk led by Tony Madgwick!

Don't forget to stop by and listen to exciting talks about community action, decolonising horticulture and going green at Fulham Palace, our main fundraising focus today.

Join our garden apprentices on a tour to learn about compost, the moat's biodiversity and the ongoing pond project.

For families

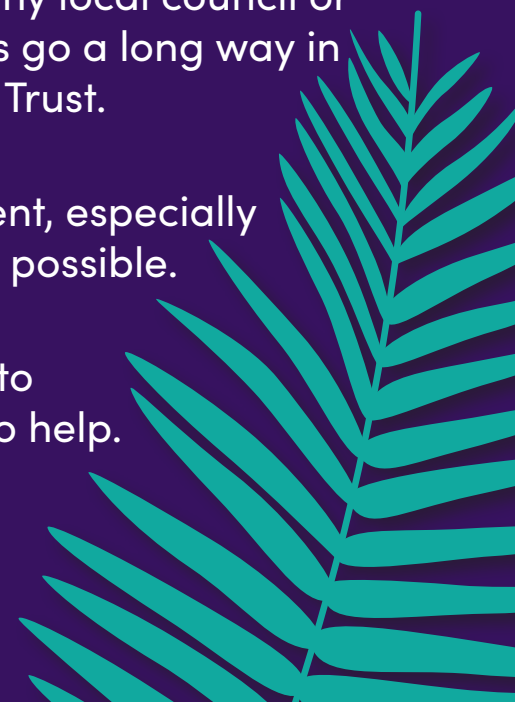
Enjoy family yoga and Monkey Music before making your way to the walled garden for garden games and a lucky dip! Dive into zorbing, bracelet making, archery tag, facepainting and more. Be sure to check the schedule for timings.

We are an independent charity so we don't receive any local council or government funding. Your attendance and donations go a long way in supporting the continued work of the Fulham Palace Trust.

Thank you to everyone who has taken part in this event, especially the Palace staff and volunteers who have made it all possible.

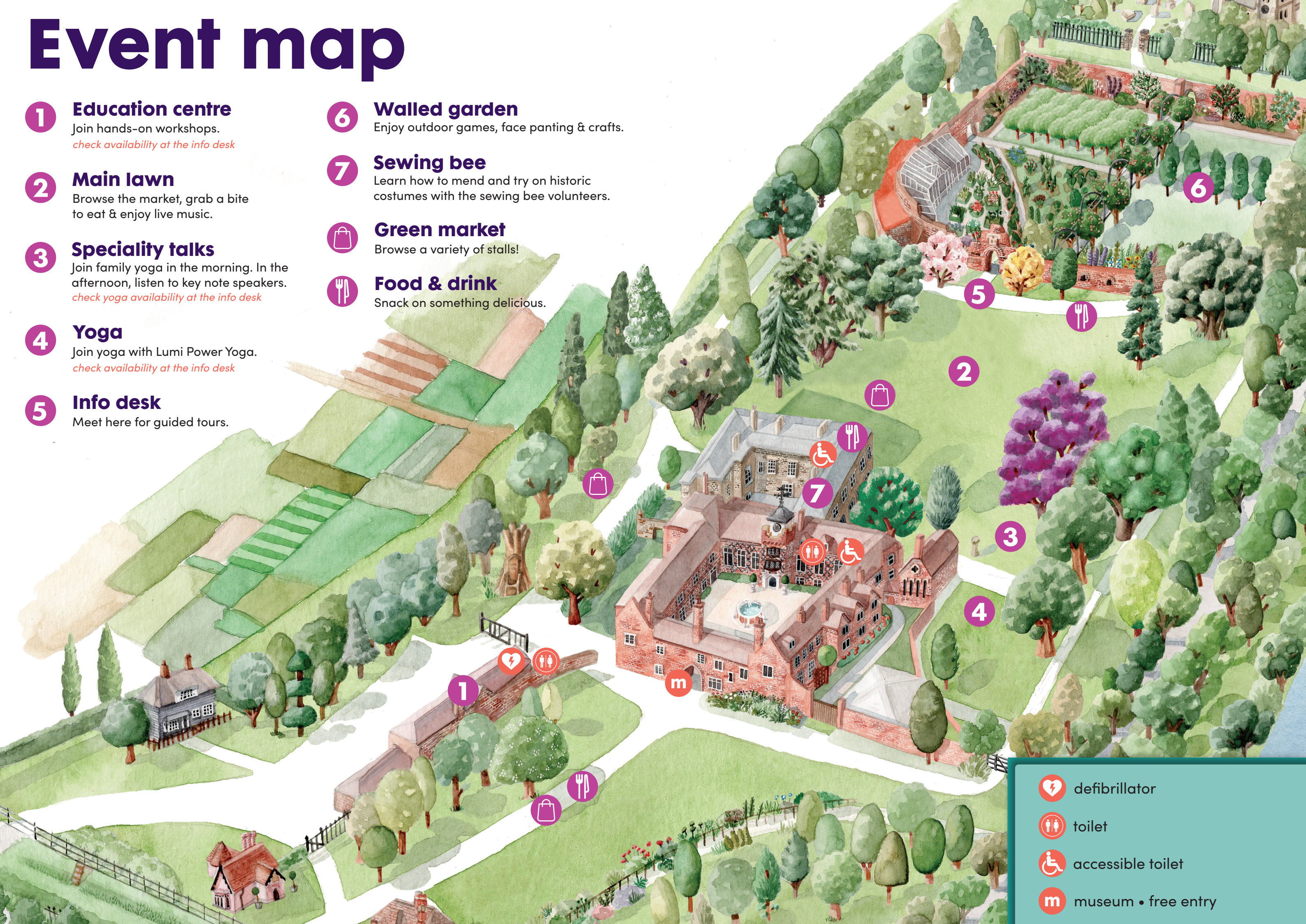
If you have any questions or concerns, please speak to any member of the Palace team who will be happy to help.





Raphaella Ashford
Events manager



Event map

- 1 Education centre**
Join hands-on workshops.
check availability at the info desk
- 2 Main lawn**
Browse the market, grab a bite to eat & enjoy live music.
- 3 Speciality talks**
Join family yoga in the morning. In the afternoon, listen to key note speakers.
check yoga availability at the info desk
- 4 Yoga**
Join yoga with Lumi Power Yoga.
check availability at the info desk
- 5 Info desk**
Meet here for guided tours.
- 6 Walled garden**
Enjoy outdoor games, face painting & crafts.
- 7 Sewing bee**
Learn how to mend and try on historic costumes with the sewing bee volunteers.
- Green market**
Browse a variety of stalls!
- Food & drink**
Snack on something delicious.



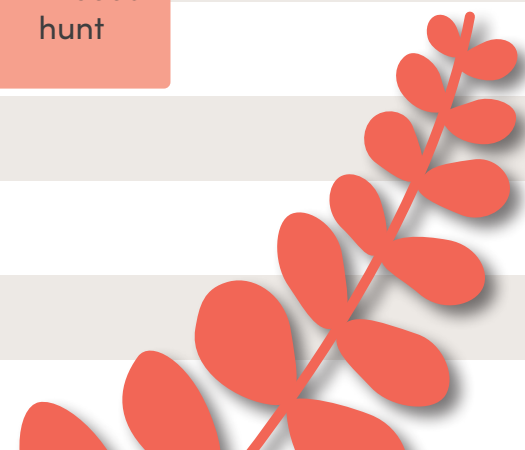
-  defibrillator
-  toilet
-  accessible toilet
-  museum • free entry



Schedule



11.00	Family yoga					
11.15				Monkey Music	Bee walk	
11.30	Compost tour					
11.45		Nature & photography workshop	Mini-beast hunt			Community action talks
12.00	Pond tour		Artist walk		Yoga with Lumi Power	Marley & Savannah Billing-Delapenha
12.15				Monkey Music		Wilf Macdonald-Brown
12.30	Biodiversity tour					Community action panel
12.45						
13.00	Chicken chat		Mini-beast hunt		Yoga with Lumi Power	Decolonising horticulture talks
13.15						Brad Scott
13.30		Nature & photography workshop				Akosua Paries-Osei
13.45						Decolonising horticulture panel
14.00	Compost tour					
14.15			Bee walk			Going green at Fulham Palace talks
14.30	Pond tour					Lucy Hart
14.45						Alex Rankin
15.00	Biodiversity tour	Nature & photography workshop	Artist walk	Mini-beast hunt		Amy Barker
15.15						Going green panel
15.30	Chicken chat					
15.45						
16.00						



Activities for all

Garden tours 5

free • drop in • all ages

Join our garden apprentices for garden taster tours and explore topics such as the ongoing pond project, biodiversity in the Palace's moat and composting.

From 11.30 • [check schedule for details](#)

Chicken chat 5

free • drop in • all ages

Meet the Palace's feathery friends in the walled garden and hear from their caretaker Pete.

13.00 • 15.30

Green woodworking 5

free • drop in • all ages

Watch live woodworking demonstrations or purchase a handmade gift made by our volunteers.

all day

Artist walk 5

free • drop in • all ages

Join Annie Trevorah and discover the ANANAS installation inspired by the Palace's pinery-vinery.

12.00 • 15.00

Bee walk 5

free - donations gladly accepted • pre-booking recommended • ages 5+

Join Dr Tony Madgwick and enjoy a small-scale guided safari where we explore the busy world of invertebrate pollinators.

11.00 • 14.00 • [check availability at info desk](#)

Nature & photography workshop 5

£6.00 • pre-booking recommended • ages 14+

See the world through a new lense! Join photographer Lara Torres for a hands-on photography workshop where all you need is a smartphone.

11.30 • 13.15 • 14.45 • [check availability at info desk](#)

Garden games & crafts 6

free • drop in • all ages

Join Bushcraft and Super Camps in the walled garden for outdoor games and crafts.

all day

Sewing bee 7

free • drop in • all ages

Join the Palace's sewing bee volunteers and learn how to darn, patch repair, applique and sashiko. Be sure to try on a costume while you're at it -- you are in a Palace after all!

all day

Face painting 6

£8.00 • drop in • all ages

A fox, flower or a fluttering butterfly, what will you be?

all day

Green market 6

free • drop in • all ages

Browse our stallholder market. From glorious gifts and goods to delicious food, to the Palace's walled garden barrow and museum shop, there's plenty of places to find the perfect something.

Be sure to test your luck at the tombola with all proceeds going towards supporting the Palace.

all day

Mini beast hunt 1

free • pre-booking recommended • ages 3 - 12

From creepy crawlies to slinking and slithering bugs, discover the insects that call the Palace's walled garden home.

11.30 • 13.00 • 15.00 • [check availability at info desk](#)

Monkey Music 1

£16.00 • pre-booking recommended • ages 1 - 4

Celebrate the green meet by making some noise with Monkey Music!

11.15 • 12.15 • [check availability at info desk](#)

Lumi Power Yoga 4

free • pre-booking recommended • all ages

Move, breathe, sweat and be energised with Lumi Power Yoga.

12.00 • 13.00 • [check availability at info desk](#)

Family yoga 3

free • pre-booking recommended • ages 18 months+

Join Everybody Yoga for a fun-filled family session.

11.00 • [check availability at info desk](#)

Speciality talks 3

free • drop in • all ages

Listen to expert-led talks from speciality speakers.

From 12.00 • [check schedule for details](#)

Speciality speakers



Akosua Paries-Osei

The Sloane Herbarium and botany
Royal Holloway University of London

Akosua's research explores the contributions of enslaved individuals and the intertwining of science and slavery in shaping racial discourses. Akosua specialises in the ethnobotanical use of plants by women from puberty through to menopause and how this knowledge has often been subsumed into modern Western medical knowledge.



Lucy Hart

Going green at Fulham Palace
Fulham Palace Trust

With a love of horticulture at age 13 and attending horticultural college at 16, Lucy's eyes were opened to public gardening and growing after through her work experience. After completing her Kew Diploma and team leader for eight years, Lucy joined Fulham Palace as head gardener in 2011.



Alex Rankin

Developing ecologically sustainable school sessions
Fulham Palace Trust

Learning producer Alex keeps busy creating outdoor school sessions that empower pupils to become environmental stewards while respecting the delicate ecological balance. Discover the practical solutions and insights used to create impactful, sustainable education for local schools.



Marley & Savannah Billing-Delapenha

Strengthen community roots
Masbro Eco Council and Sustainability Group

Marley and Savannah from the Masbro Eco Council and Sustainability Group discuss strengthening community roots. The Masbro centre is dedicated to fostering connection between local people with the goal of tackling social action that sustains and improves the local environment.



Amy Barker

Supporting the Fulham Palace greenhouse appeal
Fulham Palace Trust

After joining Fulham Palace Trust as membership and fundraising manager in spring 2023, Amy has supported the Palace through the successful library appeal and a number of exclusive member events. Amy is passionate about the Palace and its historic garden and is excited to launch the latest greenhouse campaign.



Wilf Macdonald-Brown

Hammersmith & Fulham Community Energy Cooperative
Hammersmith & Fulham Community Energy

Wilf is an English teacher and climate activist. He is an active volunteer for North Kensington Community Energy and founder of Hammersmith & Fulham Community Energy. He is a passionate about community action to tackle the climate crisis and making the world a better place.



Brad Scott

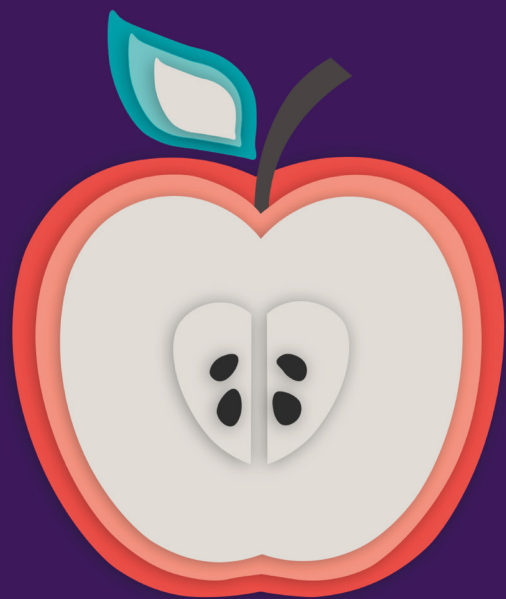
Rev. John Banister of Virginia (1654-92) and Fulham Palace
Queen Mary University of London & The Natural History Museum

Brad is a historian of science. His research encompasses the global and colonial histories of the Sloane Herbarium, probably the largest plant collection of the late seventeenth and early eighteenth centuries in the world.

Hear these excellent speakers
sharing their knowledge and
passion on the main lawn

3

Apple day



Mark your diaries! The annual apple day celebration is back on Sunday 6 October.

Take a piece of the Palace home with you.

Browse the branded range in the museum shop today.



Greenhouse appeal: Cultivating growth together

We're thrilled to announce that we're building a brand-new greenhouse in the historic walled garden!

We're building a new greenhouse in the Palace's historic walled garden! From blinds and binoculars to shelves and soil we need your help to raise £25,000 in order fill the new greenhouse with all the necessities.

Our goal is to raise £25,000 to equip the greenhouse with everything it needs. From shelving and lighting to soil and paving, every donation will go towards creating a thriving environment for growth and discovery. Your donation will empower us to furnish the greenhouse with educational tools and resources, fostering hands-on learning opportunities that will inspire the next generation of environmental stewards.



Receive a limited edition badge by making a donation of £5.00 or more!

Stop by our fundraising booth on the main lawn to learn more about the project or visit fulhampalace.org/greenhouse



Join as a family Friend

Support the Palace by becoming a family Friend for just £60!

Enjoy the perks of friendship such as priority booking to sell out events such as Father Christmas, member-only trips, invitations to exclusive events and more.

Visit our information desk to learn more on how to join as a Friend today.



Upcoming events



A tour for the curious

Wednesday 29 May • 11.00 – 12.00

Discover Fulham Palace with a family-friendly interactive guided tour! Step through a secret door and travel back in time as you explore the Palace's long and layered history. Complete challenges, dress in costume and more!

£10.50 • Booking essential



Outdoor theatre: The Comedy of Errors

Saturday 2 June • 13.30 – 16.30

Enjoy an outdoor theatre production of William Shakespeare's The Comedy of Errors performed in the picturesque walled garden.

£13.00 child • £20.00 adult • Booking essential



Supporter supper club

Tuesday 4 June • 18.30 – 20.30

Friends and Patrons are invited to enjoy Fulham Palace after hours with organically grown food and delectable tipples! Join an exclusive two-course dinner taking place in the historic Tudor courtyard.

£68.00 • Booking essential



Scan the QR code for more
information and to book or visit

fulhampalace.org/whats-on

Open daily • Free admission

Registered charity number 1140088

