

Fulham Palace School visit SEND session

**Fulham
Palace
House &
Garden**

Before your session

This session will take place outside. Please ensure your pupils are appropriately dressed. We recommend bringing waterproofs and long sleeves and trousers to avoid insect bites.

An introduction to Fulham Palace

- Watch 'Voices of the past' for an introduction to the Palace.
- Take a look at our visual story for the day.

Getting here

- Bus
 - Buses 74, 220 and 430 stop on Fulham Palace Road at the 'Bishop's Park Road' stop.
 - Buses 14, 22, 39, 74, 85, 93, 220, 265, 424 and 430 stop on Putney Bridge at the 'Putney Bridge Station / Gonville Street' or 'St Mary's / Putney Pier' stops.
- Tube
 - District Line to Putney Bridge Station. The Palace is a 15-minute walk through Bishop's Park. Walk towards Putney Bridge from the station and follow the pedestrian-only Thames Path through Bishop's Park.
- Coach
 - Please let us know if you plan to drive to the Palace. We can book a parking space for you in our on-site car park.

Things to discuss with your class before the session

- What do you think of when you hear the word 'Palace'
 - *The Palace at Fulham was not for kings or queens, but rather the Bishop of London. They are a very important religious figure, but they aren't royalty.*
- The Palace has a big garden with all sorts of plants and creatures. What sorts of noises might we hear in the garden?
 - *Wind*
 - *Bees buzz*
 - *Aeroplanes*

On the way to the Palace

- Ask your class to keep a look out for any plants or creatures they notice.
 - *Trees, flowers, vegetables, grass, birds, foxes etc.*
- Sing any songs you know about the outdoors
 - *'Can you wiggle like a worm'*
 - *'Rain rain go away'*
 - *'Five green and speckled frogs'*

Fulham Palace School visit SEND session

Fulham
Palace
House &
Garden

On the day

- 
- 1 Education centre and car park
- 2 Museum reception
- 3 Natural play area
- 4 Main lawn
- 5 Walled garden

- There is a parking space that can be booked for a minibus. 1
- If you are running late, please call 020 7751 2434.
- We will have 10 minutes in the education centre (carriage room) for visiting the bathroom and getting ready. This room will be yours to use for the day for lunch or just chilling out. 1
- We will then walk to the walled garden to begin the session. 5
- Once the session is finished you can return to the education centre or explore the museum and garden at your own pace. 1 2
- Please note there are flashing images in parts of the museum. 2

Session plan: The sleeping garden

Duration	1 hour
Location	Walled garden or education centre if wet
Learning outcomes	<p>Pupils will:</p> <ul style="list-style-type: none">• visit somewhere new• participate in both new and familiar activities• be physically active• use gross motor skills like throwing

Session plan	Time
<p>Introduction</p> <p>The session begins with a welcome song and an introduction to the Palace and the sleeping garden.</p>	10 mins
<p>Beehives</p> <p>Pupils will bring the beehives back to life with beeswax, honey, and other multi-sensory resources.</p>	10 mins
<p>Break</p> <p>We will take a short break to look around the garden. This break can be taken earlier or later or not at all, depending on how the group are doing.</p>	10 mins
<p>Pond</p> <p>Pupils will experience the pond through their senses in our water zone with sponges, watering cans, bubbles and more.</p>	10 mins
<p>Planting</p> <p>Pupils will plant a seed from the Palace garden to grow in their own space.</p>	10 mins
<p>End</p> <p>We will finish with a goodbye song.</p>	5 mins

Fulham Palace School visit SEND session

Fulham Palace House & Garden

Glossary



The **Bishop of London** is in charge of the churches in London. They used to live at Fulham Palace.

Lots of **bees** live at Fulham Palace. Some of them live in hives and some live on their own.

A **bee hive** is a home for honey bees.

The **pond** at Fulham Palace is home to all sorts of plants and creatures.



The **gardeners** take care of the big gardens at the Palace.

Most plants begin their life as little **seeds**.

Healthy plants grow in **soil** and need sun and water.

School activity

Recycled Plants

This activity is perfect for using leftover vegetable scraps and reducing waste at home and in school. It works best with herbs, spring onions, garlic, lettuce and celery.

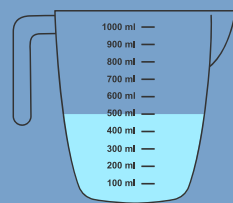
You will need



chopping board



scissors



water



bowl



plant

1

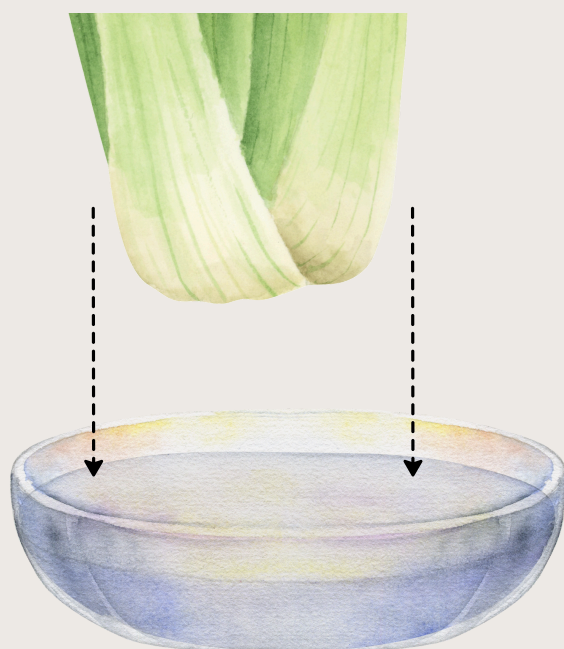
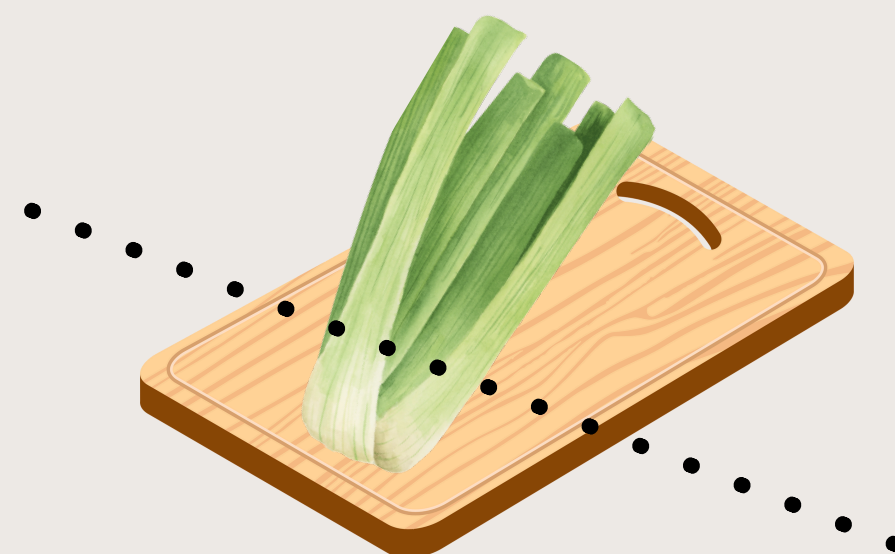
Place your chosen plant on the chopping board. Using a sharp knife or scissors, cut the end off the plant. If you're using herbs, simply pick any leaves towards the bottom of the stem off.

2

Fill your vessel with enough water to cover the root or base of your plant.

3

Place the base or root of your plant in the water.

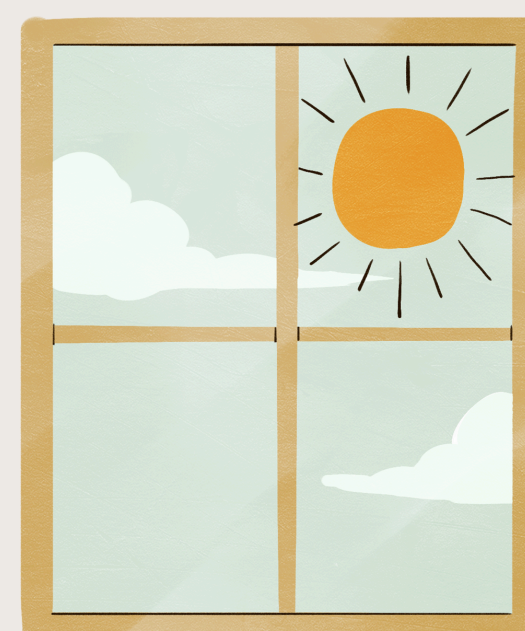


4

Move the plant and the vessel into a sunny spot - your classroom windowsill is probably perfect!

5

Wait and watch the plant regrow.



Top tip

Changing the water every couple of days stops the water from becoming stagnant.

Don't forget to share your gardening skills with us on social media!
#fulhampalace

Fulham Palace School visit SEND session

Fulham
Palace
House &
Garden

Waste management

You must split your waste into black bin waste, food waste, and dry mixed recycling. This is in line with new government legislation, which you can read about by following this link (<https://www.gov.uk/guidance/simpler-recycling-workplace-recycling-in-england>).

Failing to split your waste will result in a £75 fine. You are also welcome to take your rubbish home with you.

General waste

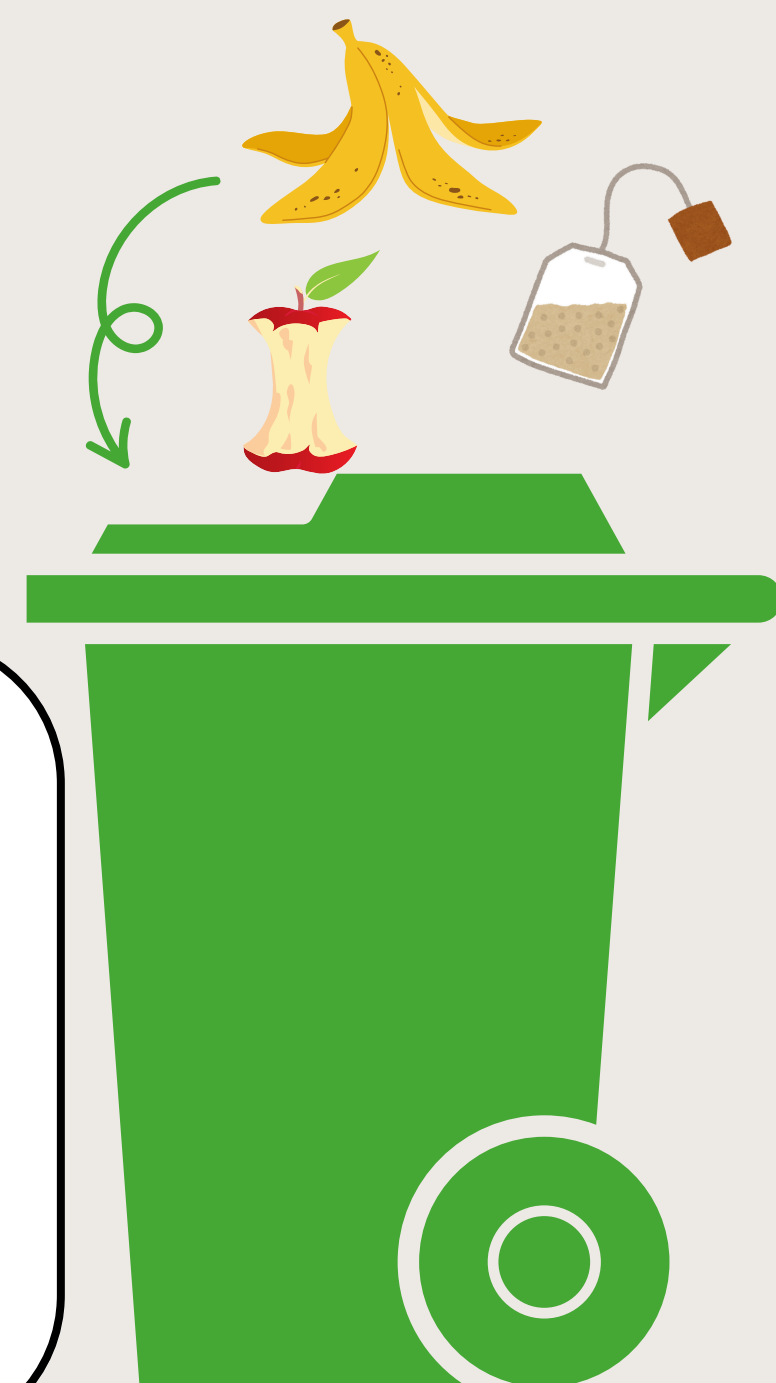


- ✓ tissues & blue roll
- ✓ polystyrene
- ✓ dirty packaging
- ✗ electronics
- ✗ batteries
- ✗ clinical waste
- ✗ toners & cartridges



Food recycling

- ✓ coffee grounds
- ✓ fruit & veg peels
- ✓ tea bags
- ✓ plant waste
- ✓ plate scrapings
- ✗ liquids
- ✗ food packaging
- ✗ biodegradables & compostables



Dry mixed recycling



- ✓ paper
- ✓ hard plastics
- ✓ tins & cans
- ✓ cardboard
- ✓ glass bottles & jars
- ✗ food
- ✗ plastic bags & film
- ✗ crisp packets
- ✗ coffee cups

